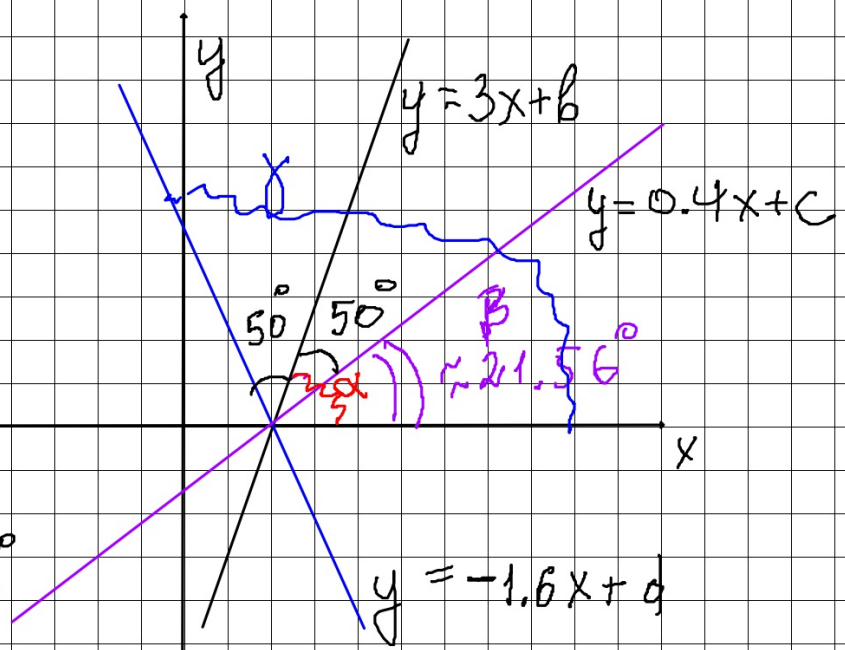


$$\text{gradient} = 3$$

$$\Rightarrow \text{tg } \alpha = 3$$

$$\Rightarrow \alpha \approx 71.56^\circ$$



$$\Rightarrow \beta \approx 21.56^\circ$$

$$\Rightarrow \text{grad } 1 = \text{tg } 21.56^\circ$$

$$\approx 0.4$$

$$\beta = 71.56 + 50^\circ = 121.56^\circ$$

$$\text{grad } 3 = \text{tg } 121.56^\circ = -\text{tg } 58.44^\circ \approx -1.6$$